

Release Notes – Network Planner

24/06/2024



SupplyVue Network Planner

Releases for June 2024

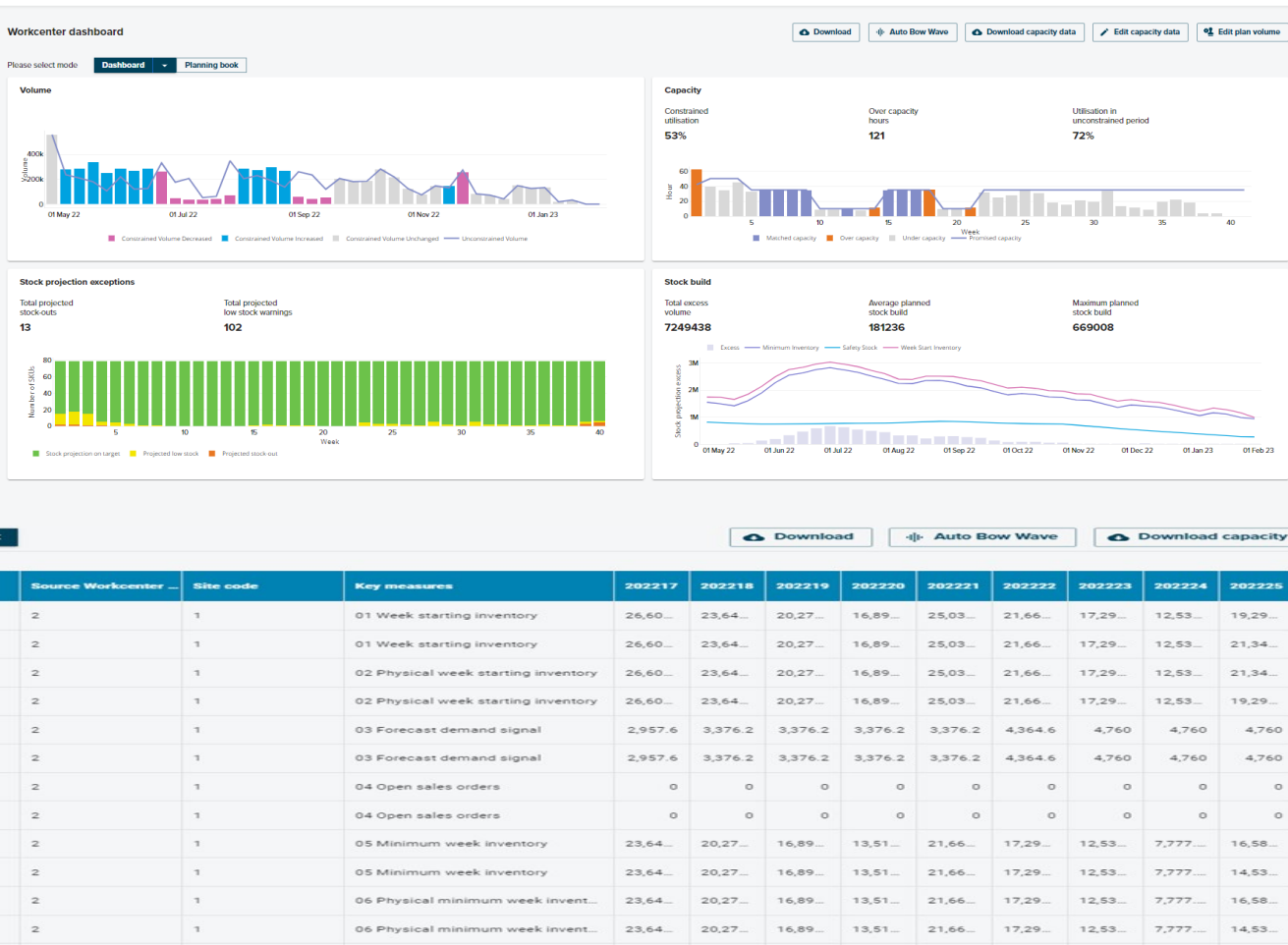
Features and Bugs

Features

- **Release 1:** showing the constrained volume by week on the workcentre, compared with the unconstrained volume
- **Release 2:** showing the required hours by week on the workcentre compared to the available hours

Bugs

- **Release 3:** Showing the week-by-week SKU-site combination count of SKUs in which the stock projection is on target (Green), below safety level, but non-zero (amber) or projecting zero stock (red)
- **Release 4:** showing the inventory projection compared to safety stock and highlighting the weeks where there is a inventory stock build as a result of bringing volume forward to resolve over-capacity weeks



SupplyVue Network Planner

Releases for May 2024

Features and Bugs

Features

- **Release 1:** showing the constrained volume by week on the workcentre, compared with the unconstrained volume
- **Release 2:** showing the required hours by week on the workcentre compared to the available hours

Bugs

- **Release 3:** Showing the week-by-week SKU-site combination count of SKUs in which the stock projection is on target (Green), below safety level, but non-zero (amber) or projecting zero stock (red)
- **Release 4:** showing the inventory projection compared to safety stock and highlighting the weeks where there is a inventory stock build as a result of bringing volume forward to resolve over-capacity weeks

